

NS0708-21919

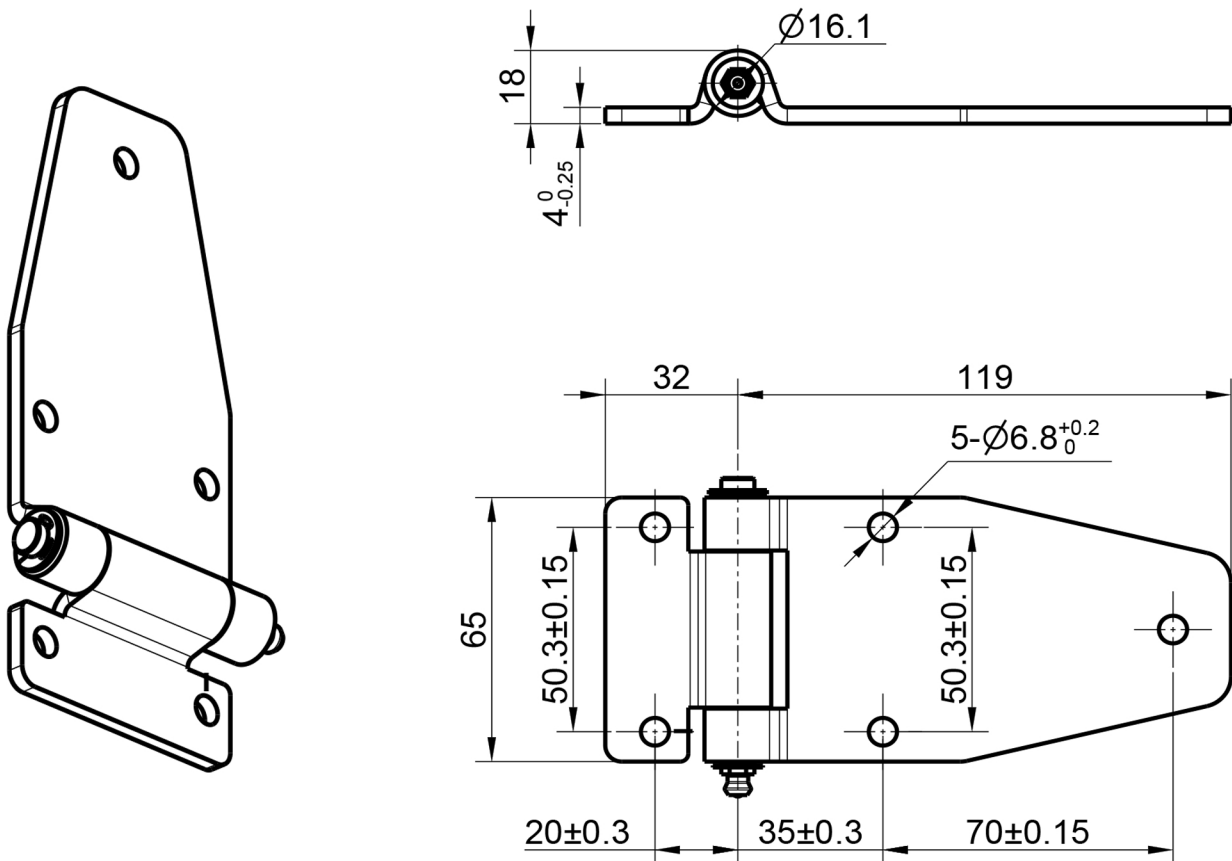


Polished Stainless Steel short butt hinge

dimensions 151mm over all length x 65mm wide butt with taperd top leaf

Stainless steel 304 is a common material used in hinges for its resistance to corrosion and strength.

Brass grease nipple lubrication fitting: The grease nipple fitting allows for easy lubrication to reduce friction and prevent wear. This is especially important for outdoor or heavy-duty hinges that may be exposed to elements or subject to frequent movement.



I.R.S.
Build With Quality

RUBBER
HARDWARE
TAPES
SEALANTS
CUTTING

1300 767 567

www.indrub.com.au