

# CONCEALED HINGE

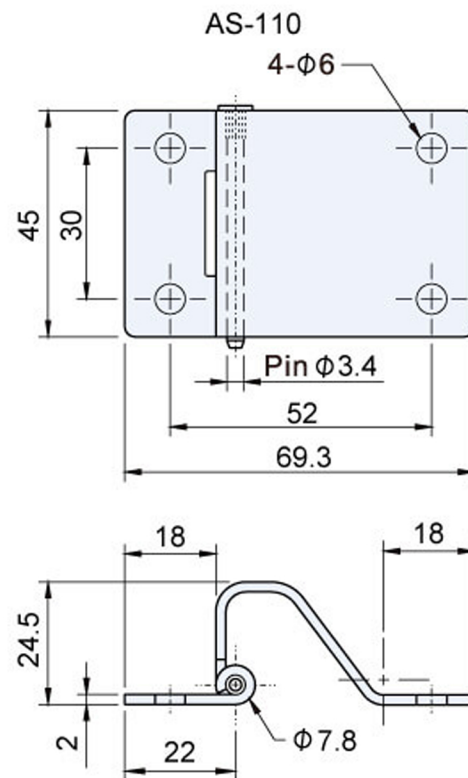
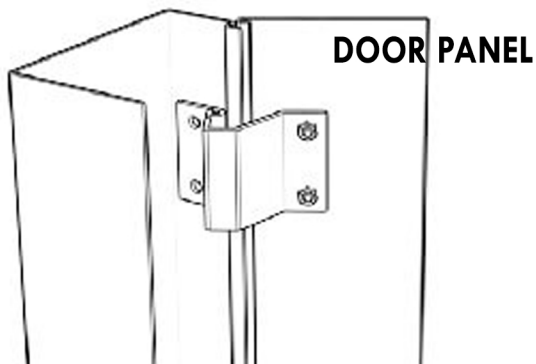
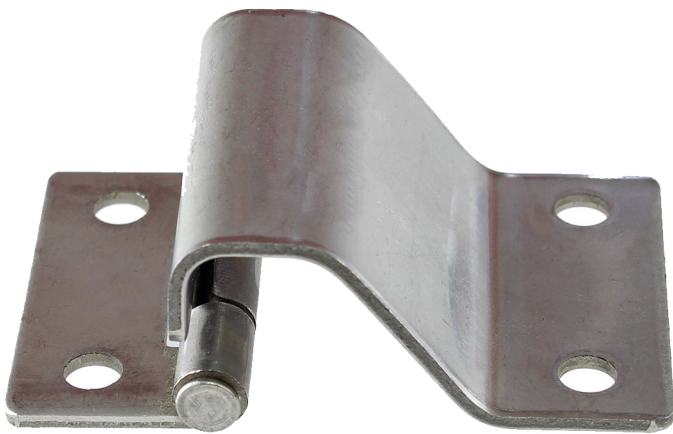


## MATERIAL AND FINISH

HINGE BODY: SUS304 STAINLESS STEEL 2MM THICKNESS  
NATURAL FINNISH, BOLT-ON

HINGE WEIGHT: 330GM

IN ACCORDANCE WITH - RoHS.



**LEFT HAND RIGHT OPENING**

PART NO.	DESCRIPTION
AS-AS-110	CONCEALED HINGE 45MM X 69.3 X 2MM PLATE 304 STAINLESS STEEL UNIVERSAL LEFT / RIGHT HAND



**I.R.S.**  
Build With Quality

RUBBER  
HARDWARE  
TAPES  
SEALANTS

1300 767 567

[www.indrub.com.au](http://www.indrub.com.au)