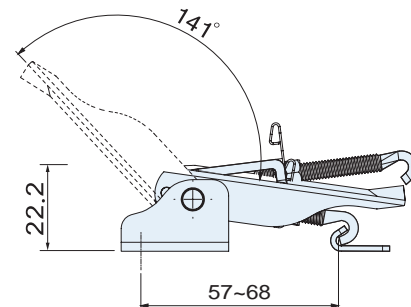
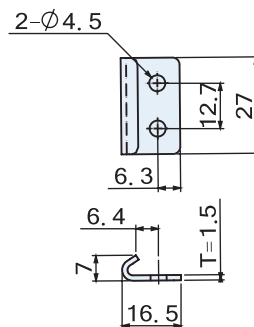
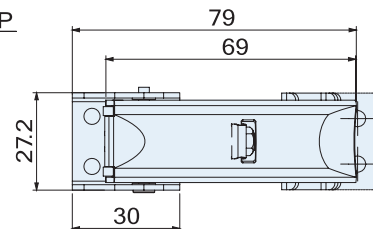
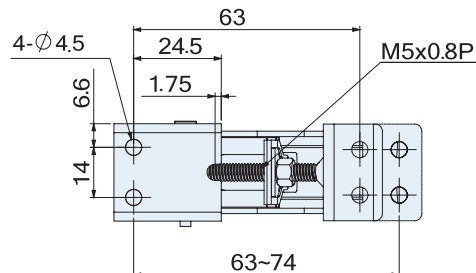


CT-21227



MATERIAL AND FINISH

- Steel(SPCC), Zinc plated.
- Stainless steel(SUS304), Vibration ground.

FEATURES

- The adjustable latch rod can depend on the spiral tooth to be reversing, to adjust the suitable compression force.
- Make use of assistance latches and locks to do an additional protection: seriously vibrated \ suddenly opened \ Loading huge capacity.

SPECIFICATIONS:

Unit: mm

Item No.	Material	Load capacity (kg)	Weigh (g)
CT-21227	SPCC	80	80
CS-21227	SUS304	70	80