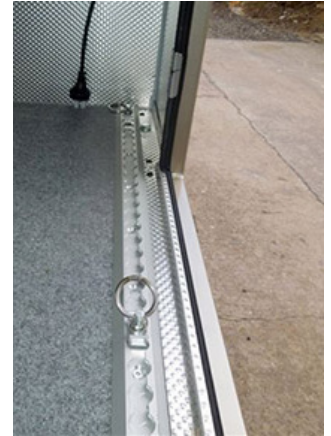


BODY HARDWARE

B2

ALLY-CARGO TRACK ANCHOR SYSTEM



The **Ally-cargo track anchor system** withstands up to 1000kg vertical force on track and ring restraint when used together. It withstands up to 350kg force (at 45 degree angle) on track and ring restraint when used together.

Note that the above force resistance specifications were determined in controlled test conditions and IRS cannot control how the track will be fixed or used after it leaves our store.

We can provide you with copies of the test certificates if required.

Installation Guide

- Stainless steel countersunk bolts must be used in every pre-drilled 6mm countersunk hole at 100mm centres in track.
- Installer to supply bolts of suitable length for mounting track to subframe with flat washers and nylock nuts.
- It is the installer's responsibility to ensure the subframe is of high strength material.

Step 1: Hold track in desired location and ensure bolt will not interfere with items behind. Ensure adequate access to rear to allow tightening of bolts.

Step 2: Once in the correct location, drill holes in subframe using pre-drilled hole locations in track as template. Remove track before drilling. Ensure subframe suits hole locations.

Step 3: Tie down spring rings. Available in any quantity.



PART NO.	SIZE	WEIGHT	DESCRIPTION
BHCARGO50MMA2.4	2.4 metres long, 45mm wide	10 kg	Ally-cargo track heavy duty anchor system
BHCARGO50MMX1MT	1.0 metre long, 45mm wide	8 kg	Ally-cargo track heavy duty anchor system
BHCARGO50MMCLIP	45mm.	300 gm	Ally-cargo track spring anchor clip (Note that clip rings are sold separately.)
bhcargo50mmend	35mm long, 50mm wide	100 gm	Ally-cargo track end cap. PVC - UV stable. Safe, clean finish to cargo tracks.



I.R.S.

1300 767 567

**RUBBER
HARDWARE
TAPES
SEALANTS**

WA Store: 102 Briggs Street, Welshpool 6106
QLD Store: 17 Alexandra Place, Murarrie 4172
Email: websales@indrub.com.au

www.indrub.com.au