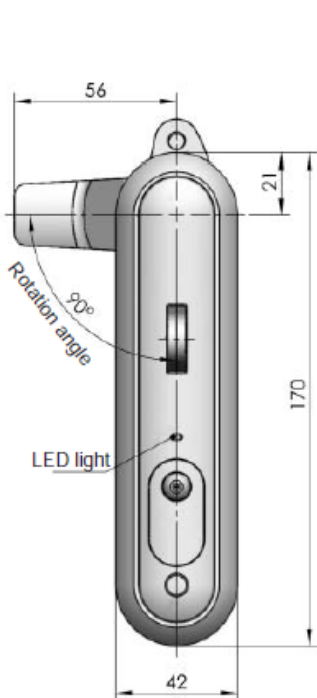


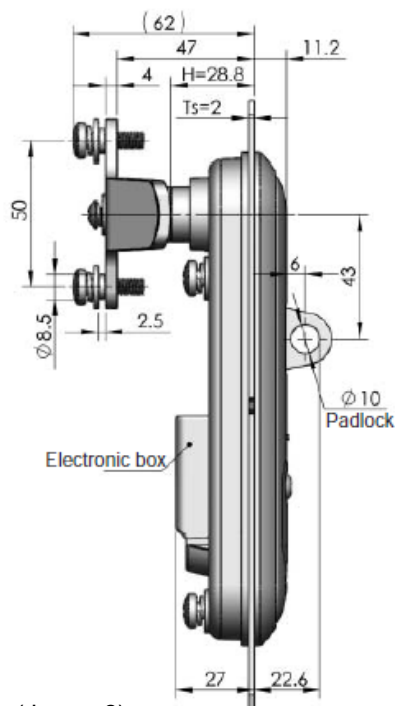
LOCKS & HANDLES

NS864-8-7 POWER SWING HANDLE

C1



(Image 1)



(Image 2)

Main material and finish:

Zinc Die cast with Black UV stable high salt mist resistant powder coat with 304 stainless steel locking cam.

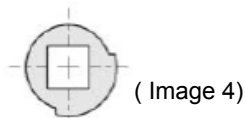
Application:

The Handle in operation is quarter-turn and can be set up as one point or with the holes and screws provided (Image 2) rods can be attached to the cam allowing 3 point locking system you can open the door either RH or LH by changing the direction of the position device. (Image 4)
(Rod Guides and zinc plated rods are available)

Power override Default key : K052

Assembly Requirements:

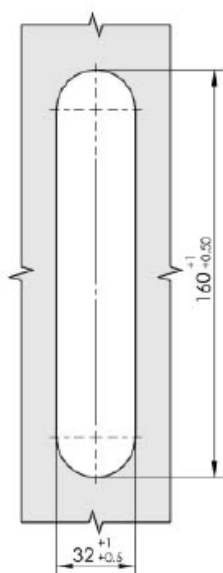
To prevent dropping the lock make sure the door is horizontal when assembling and the cut out hole on the frame matches with the shape of the lock (Image 3) as long as the lock and the cutout are correct a waterproof IP65 can be achieved with out sealant.



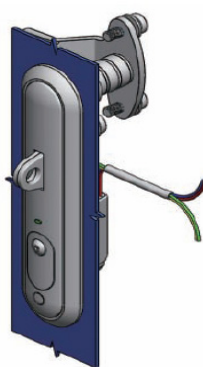
(Image 4)

The position device controls the direction of the handle opening with the Handle in-situ this can be turned to create Right hand or Left hand opening.

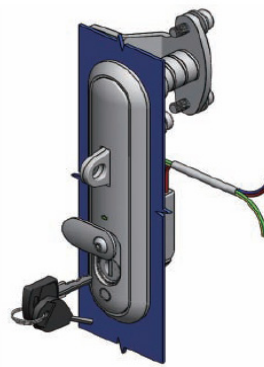
Do not drop or damage the lock when installing and only clean the surface of the lock with a dry cloth.



(Image 3) Cut out



Closed



Power Override key
(Handle shown with padlocking device option)



(Image 5)

Handle in open position



I.R.S.

1300 767 567

**RUBBER
HARDWARE
TAPES
SEALANTS**

WA Store: 102 Briggs Street, Welshpool 6106
QLD Store: 17 Alexandra Place, Murarrie 4172
Email: websales@indrub.com.au

www.indrub.com.au

LOCKS & HANDLES

C2

NS864-8-7 POWER SWING HANDLE

(Image 1)



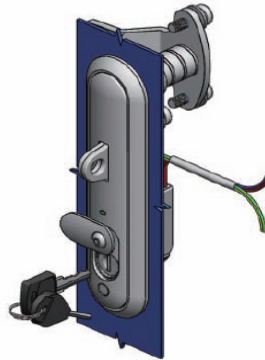
Closed

(Image 2)

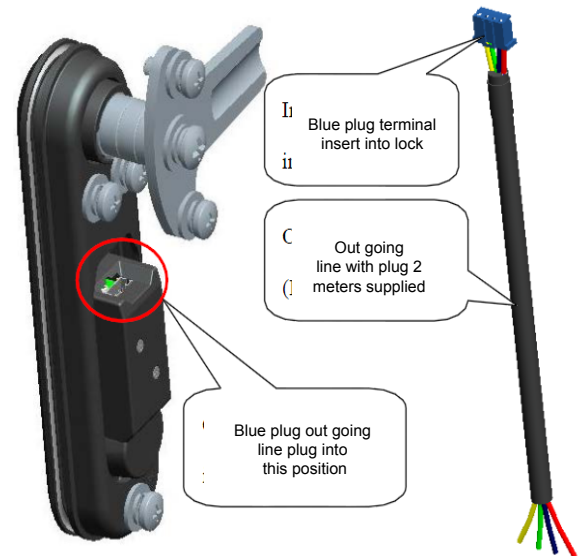


Handle in open position
(Handle shown with padlocking device option)

(Image 3)



Power Override key



Opening step:

1. When power is activated by the remote control the green LED signal light on the face of the handle will light up.
(Image 1)
2. To open (pop or bounce the handle out) Press the round dot below the key override panel on the swing handle, (image2) the swing handle will bounce from lock body to rotate manually to open. (See Video on web site)
3. In case of power fail key override option is standard.
(Image 3)
4. The green signal will always shine until auto power off.

Electronic lock instructions:

1. Rated voltage DC12V, rated current 250-300 mA
(electricity charged no more than 40 seconds).
2. Red Line Positive +
3. Black line negative -
4. White line Signal
5. Yellow line Signal

ERP

Electronic lock

Manual lock

Support	With padlock	Without padlock	Support	With padlock	Without padlock
Metal support	NSMS864Z2E052019	NS864-8-7	Metal support	MS864Z2E052003	MS864Z2E052001



I.R.S.
1300 767 567

**RUBBER
HARDWARE
TAPES
SEALANTS**

WA Store: 102 Briggs Street, Welshpool 6106
QLD Store: 17 Alexandra Place, Murarrie 4172
Email: websales@indrub.com.au

www.indrub.com.au

LOCKS & HANDLES

NS864-8-7 POWER SWING HANDLE

C3

ITEM	SPECIFICATION/CONDITION	
Model No.	NS864-8-7	
Dimension of Lock	See image 1 and 2 page C1.	
Dimensions of cut out	See image 3 page C1.	
Rated Voltage	DC 12V	
Operating voltage	DC12V±20%	
Power consumption	3.6W	1) At 25°C, 65% RH 2) Rated Voltage
Rated current	≤0.25A	
IP rating	IP65	
Weight	0.72 kg	

NAME	MATERIAL
Housing	ZDC - Zinc Die Cast
Handle	ZDC - Zinc Die Cast
S3C5800 Cam	SUS 304 Stainless Steel
Electrical Box	ABS

ITEM	CONDITION
Operating Conditions	Temperature: -20 ~ +65°C Humidity: 5 ~ 90%
Storage Conditions	Temperature: -40 ~ +80°C Humidity: 0 ~ 90%
Elevation height	Elevation: -60m~4000m
Electronic parts expect life	8 years @ 25°C/ 85% Relative humidity (RH)
Mechanical parts expect Life	8 years @ 25°C/ 85% Relative humidity (RH)



I.R.S.

1300 767 567

**RUBBER
HARDWARE
TAPES
SEALANTS**

WA Store: 102 Briggs Street, Welshpool 6106
QLD Store: 17 Alexandra Place, Murarrie 4172
Email: websales@indrub.com.au

www.indrub.com.au