

## Rubber isolator top part washer

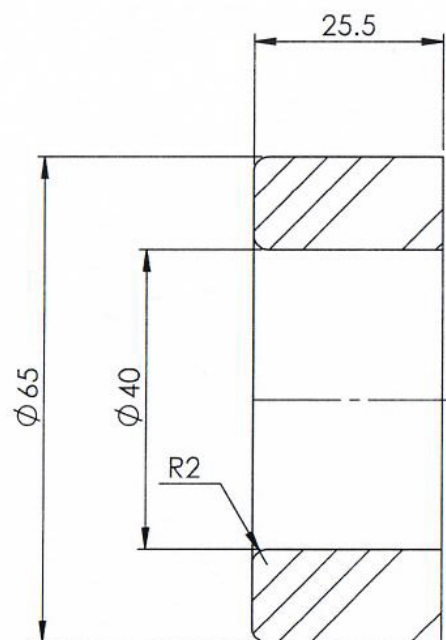
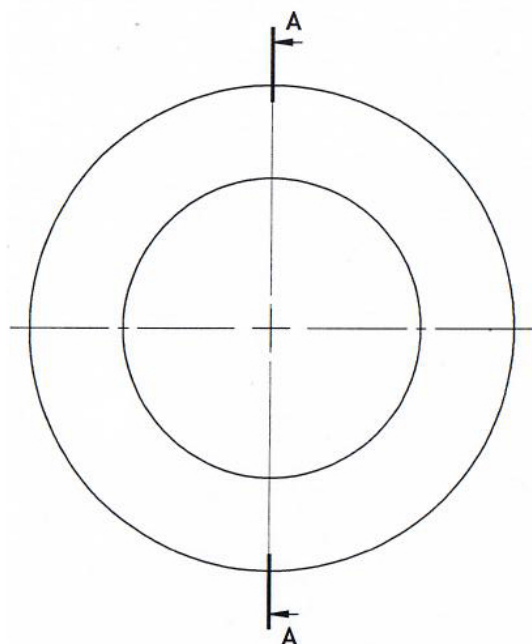
### RM7840-2 (upper part)

#### Neoprene Rubber Isolator washer upper part.

\* Neoprene Rubber 65-70 Shore A hardness

\* Temperature -30 °C to +80 °C.

(note: Lower part of the connecting isolator available : Code RM7840-1 )



**SECTION A-A**

Material: 65 Shore Harness Rubber  
Colour: Black

PART NO.	DESCRIPTION
RM7940-2	Neoprene rubber 65-70 shore A hardness, Temperature range -30 to +80c, Dimensions: 70mm x 70mm x 30mm



**I.R.S.**  
Build With Quality

RUBBER  
HARDWARE  
TAPES  
SEALANTS

**1300 767 567**

**www.indrub.com.au**