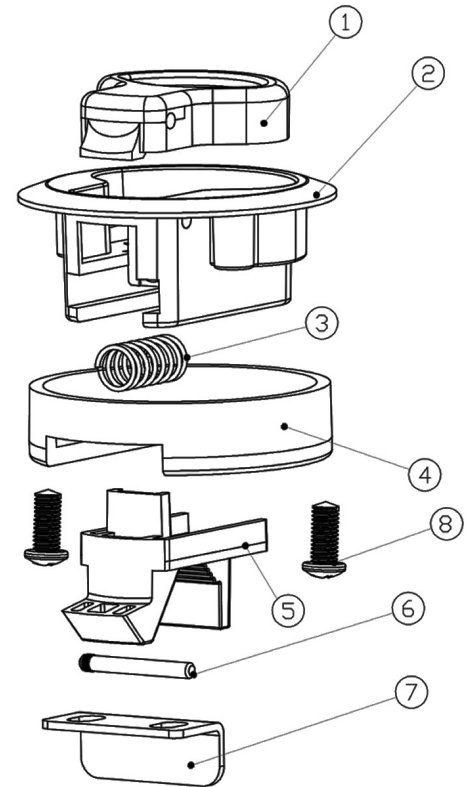
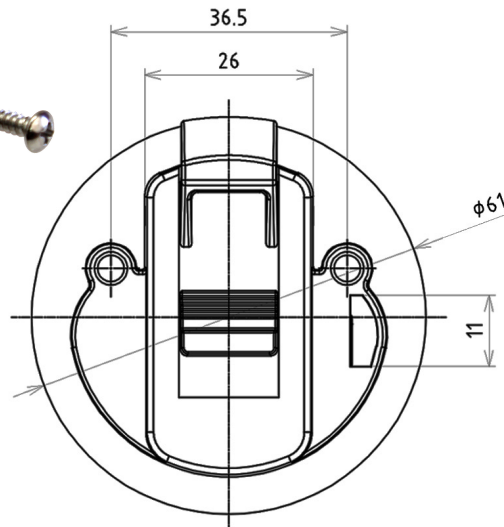
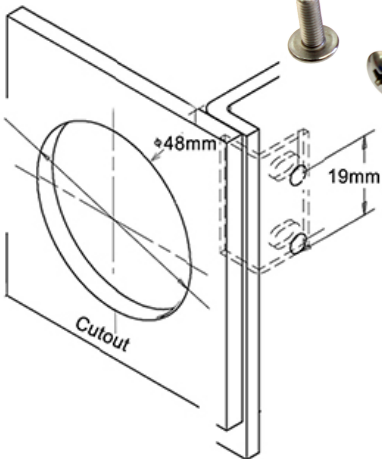
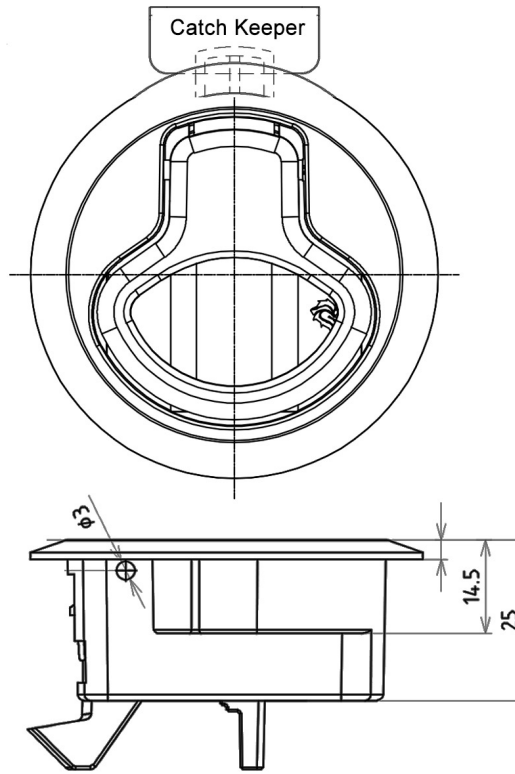


LOCKS & HANDLES

BHM1-61 FLUSH PULL LATCH

C81



Latch Sub-Assembly

1. Pull handle Pc/Pbt black secured with 304 stainless steel pin
2. Main body housing Pc/Pbt black
3. Spring 304 stainless steel
4. Mounting bracket 2mm-7mm panel thickness
5. Actuating tab and pawl Pc/Pbt black
6. 304 stainless steel pin to secure pull handle
7. 304 stainless steel keeper
8. 304 stainless steel fixings

BHM1-61 Flush push-to-close lift handle with internal release, corrosion resistant with all metal parts 304 stainless steel ideal for marine external or internal environments.

PART NO.	DESCRIPTION
BHM1-61	Flush pull latch. Push-to-close lift handle with internal release.



I.R.S.
1300 767 567

**RUBBER
HARDWARE
TAPES
SEALANTS**

Email: websales@indrub.com.au

www.indrub.com.au